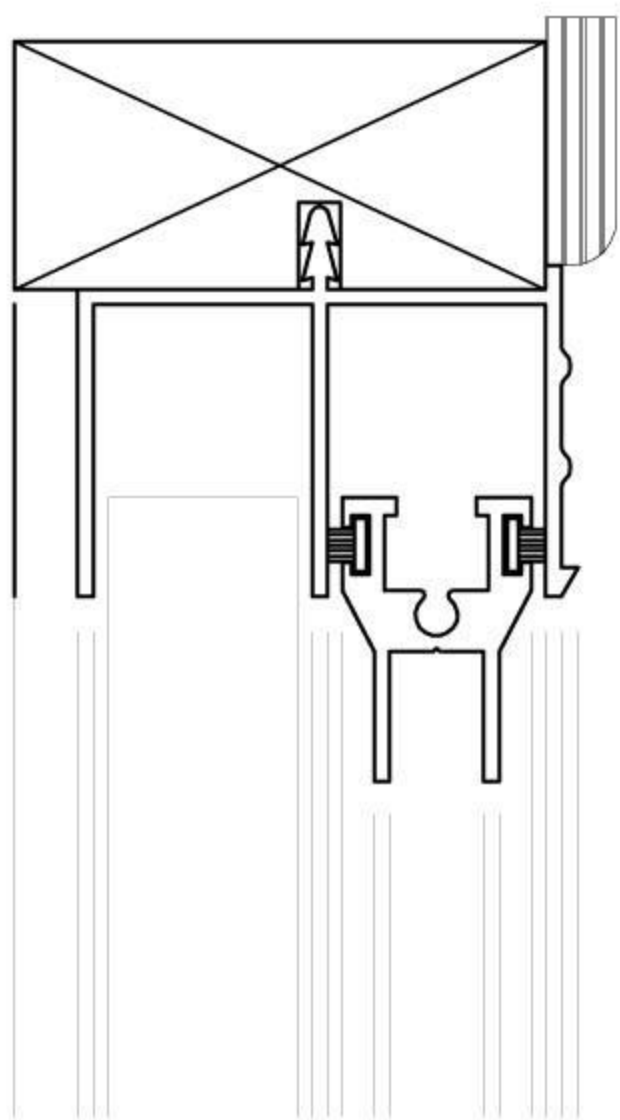
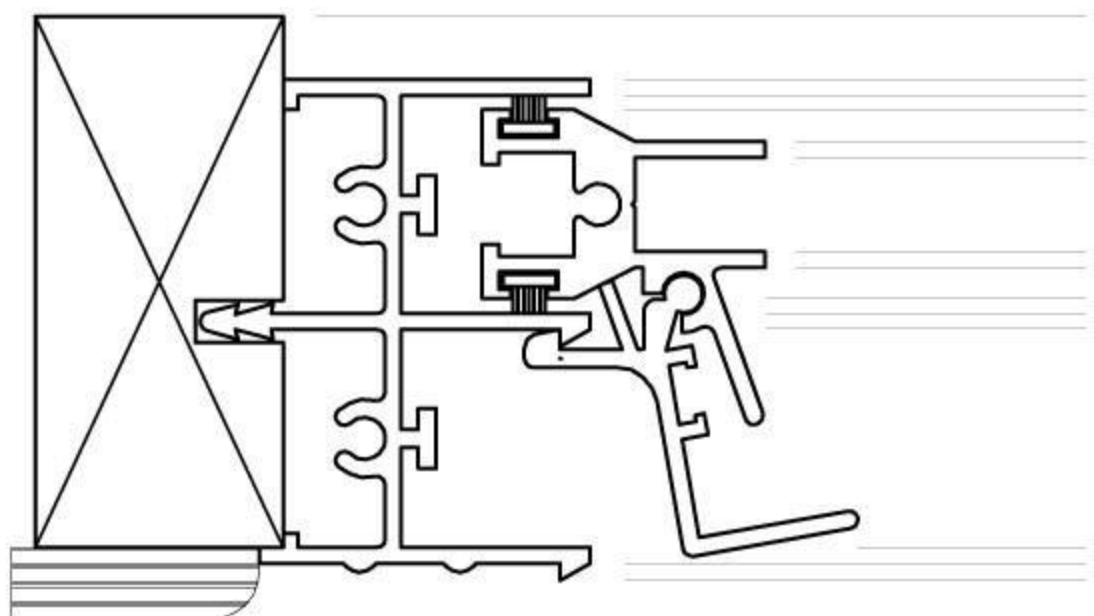


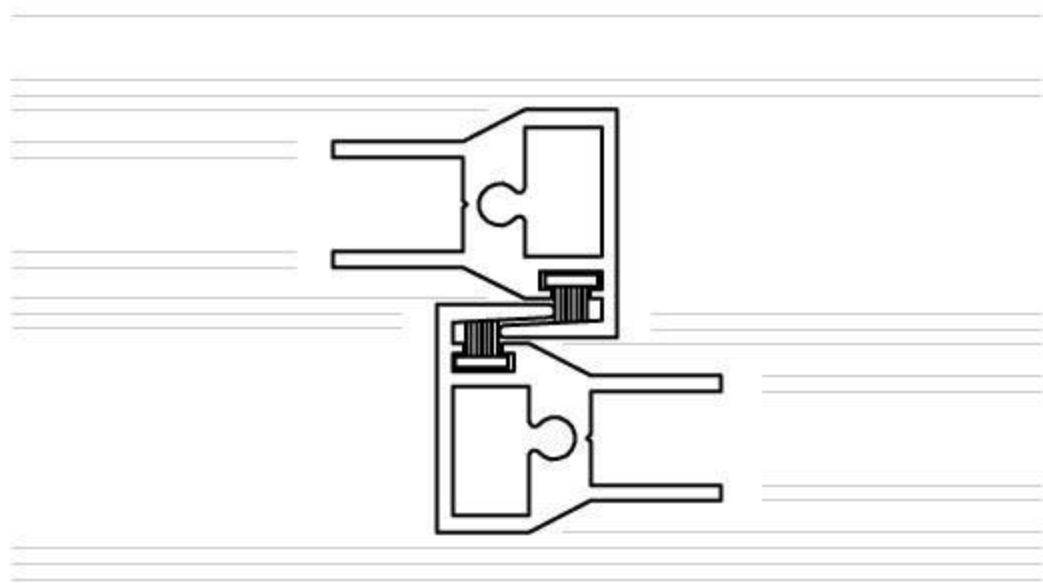
Typical elevation of a SS5 horizontal Sliding Secondary Glazed window frame.



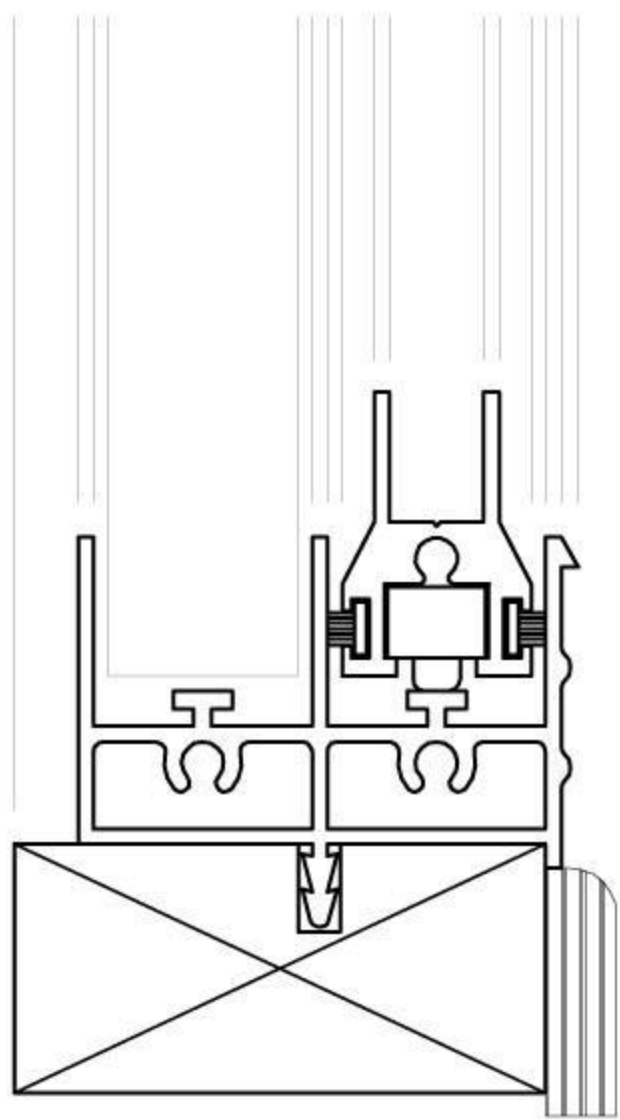
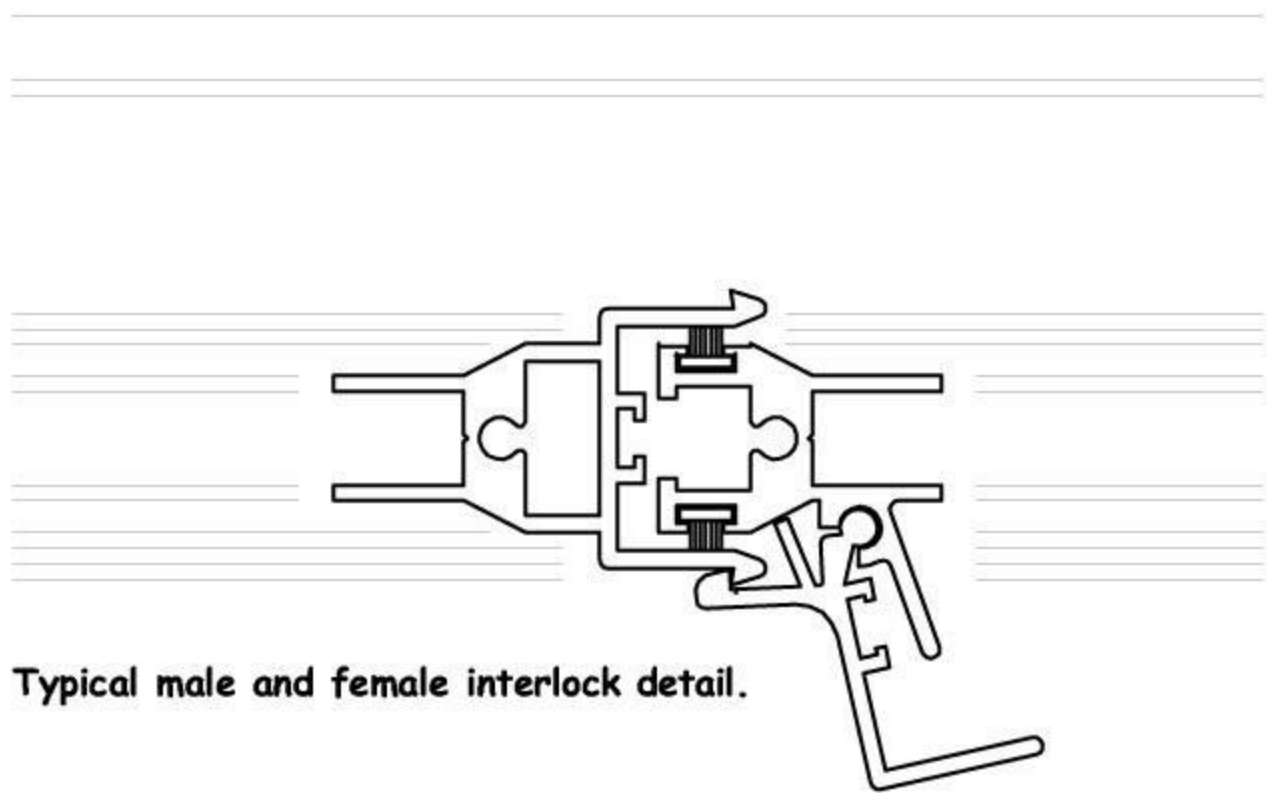
Typical Jamb detail.



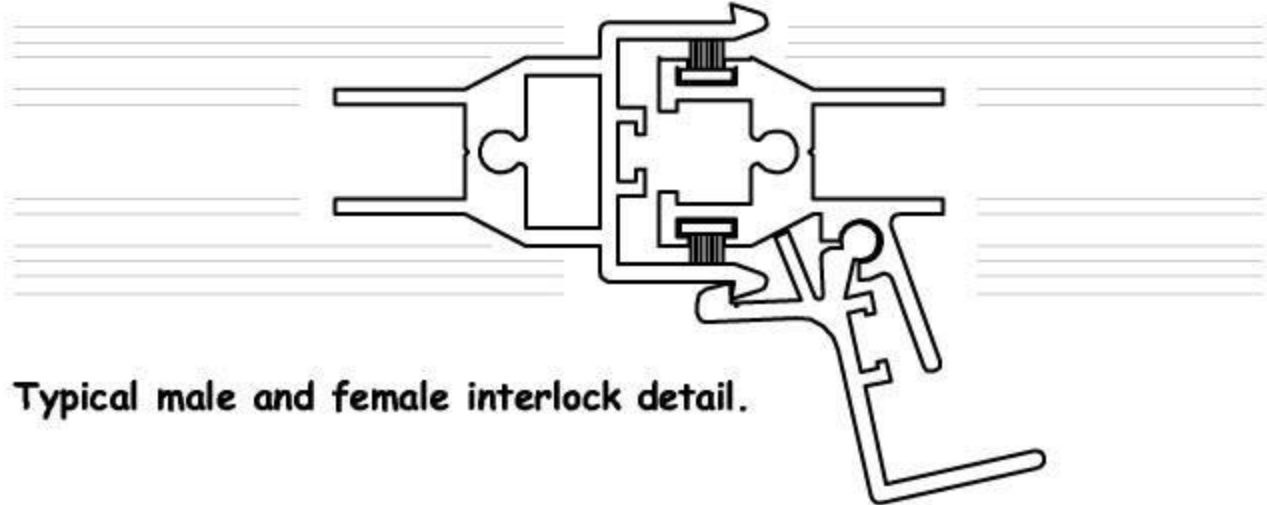
Typical Interlock detail.



Typical male and female interlock detail.



Vertical section through a Horizontal Slider.



Typical male and female interlock detail.

Specification:

Aluminium sections are to be extruded from 6060 alloy EN755-2.  
EP White Gloss - 60 Micron finish.  
All aluminium to be powder coated to BS 6496.  
Frames and sashes are to be mechanically jointed using BZP screws to DIN 7982 - 8 microns.  
The sub-frame is from English hardwood, kiln dried to KD:FAS1F.  
Sub-frames are butt jointed using BZP screws to DIN 965 - 8 microns.  
Standard sizes 45mm x 21mm & 62mm x 21mm.  
Non-standard sizes are available to order.  
All frames are factory glazed.  
A choice of 4mm or 6mm clear float annealed or toughened.  
6.4mm clear laminate.  
6.4mm Acoustic Glass.  
Gaskets are in accordance with BS 2782 in a standard colour of BLACK.  
All sash polypropylene woolpiles are to BS 7386.  
All frames include upvc or timber trim

Revision:

Drg. No. SS5 Horizontal Slider

Scale: 1:20 & 1:2 (at A4)

Client:

Drawn by:

Architect:

Date:

Contract:

Silent Night Secondary Glazing  
Protech Direct  
(www.secondaryglazing.com)  
Blue Bridge Centre  
Horndale Avenue  
Newton Aycliffe  
Durham  
DL5 6DS  
tel: 01325 310520